

Crochet Hat & Beanie Sizing Chart + Template



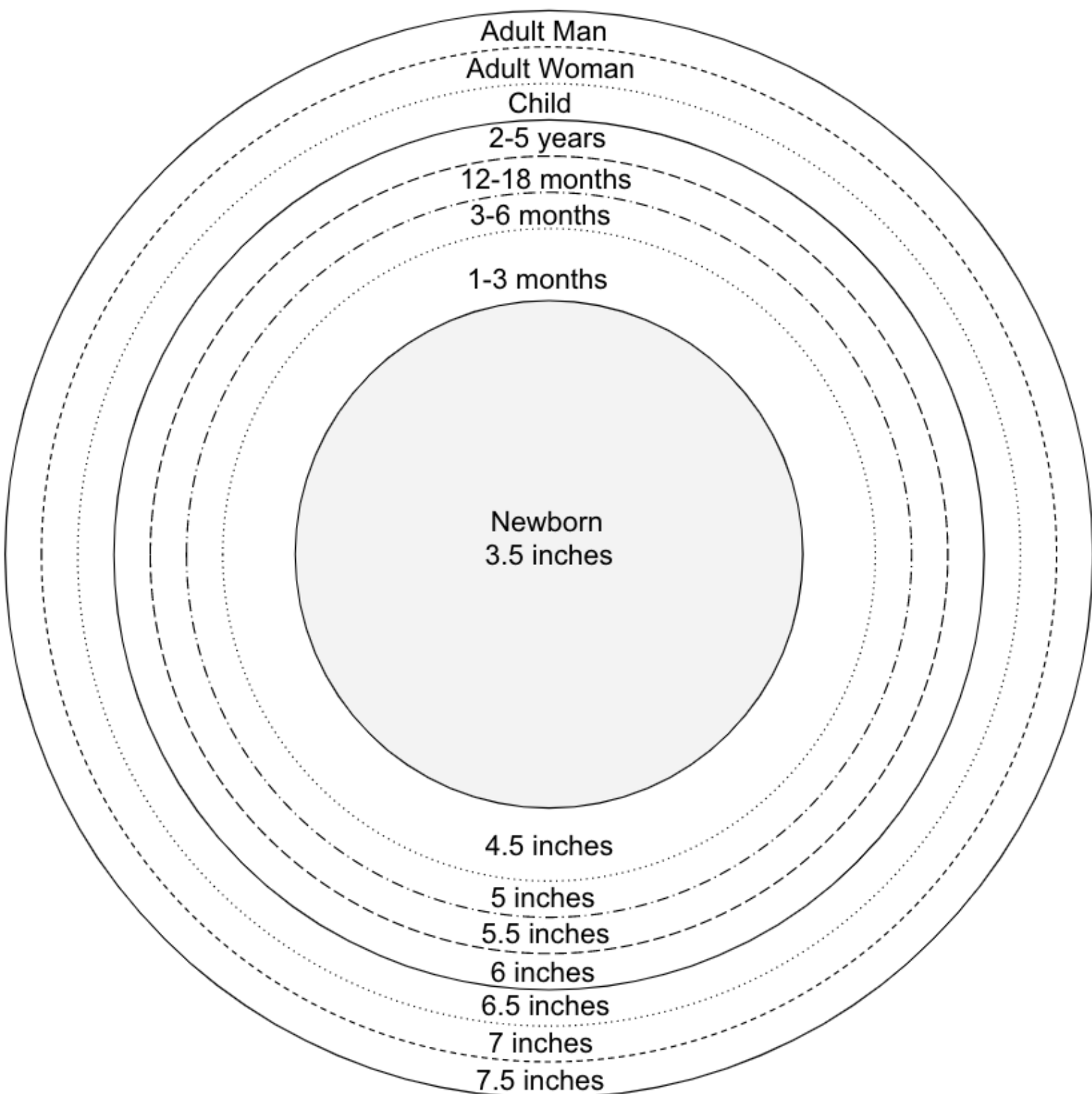
startcrochet.com

Crochet Hat & Beanie Sizing Chart

Size	Head Circumference (Distance Aound Head)	Circumference (Distance Around beanie or Hat)	Crown Circle Diameter (Distance Across top)	Beanie Side Length (Distance from Top of Crown to Bottom of Ears)	Hat Side Length (Distance from Top of Crown to Top of Ears)
Newborn	13 inches	12 inches	3.5 inches	4.5 inches	3.5 inches
	33 cm	30.5 cm	9 cm	11.5 cm	9 cm
1 - 3 months	14 inches	13 inches	4.5 inches	5.5 inches	4.3 inches
	35.5 cm	33 cm	11.5 cm	14 cm	11 cm
3 - 6 months	15 inches	14 inches	5 inches	6 inches	4.7 inches
	36 cm	35.5 cm	13 cm	15.5 cm	12 cm
6 - 12 months	16 inches	15 inches	5.25 inches	6.5 inches	5.1 inches
	40.5 cm	38 cm	14 cm	16.5 cm	13 cm
12 - 18 months	17 inches	16 inches	5.5 inches	6.75 inches	5.5 inches
	43.5 cm	40.5 cm	14 cm	17.5 cm	14 cm
18 - 24 months	18 inches	17 inches	5.75 inches	7.25 inches	5.7 inches
	46 cm	43.5 cm	15 cm	18.5 cm	14.5 cm
2 - 5 years	19 inches	18 inches	6 inches	7.5 inches	5.9 inches
	46 cm	46 cm	15 cm	19 cm	15 cm
Child	20 inches	19 inches	6.5 inches	8 inches	6.1 inches
	51 cm	48 cm	16.5 cm	20 cm	15.5 cm
Teen	21 inches	20 inches	6.75 inches	8.5 inches	6.3 inches
	53 cm	51 cm	17 cm	21.5 cm	16 cm
Adult Woman	22 inches	21 inches	7 inches	8.75 inches	6.7 inches
	56 cm	53 cm	18 cm	22 cm	17 cm
Adult Man	23 inches	22 inches	7.5 inches	9.25 inches	7 inches
	58.5 cm	56 cm	19 cm	23.5 cm	18 cm

Crochet Hat Sizing Template

For Babies, Children & Adults

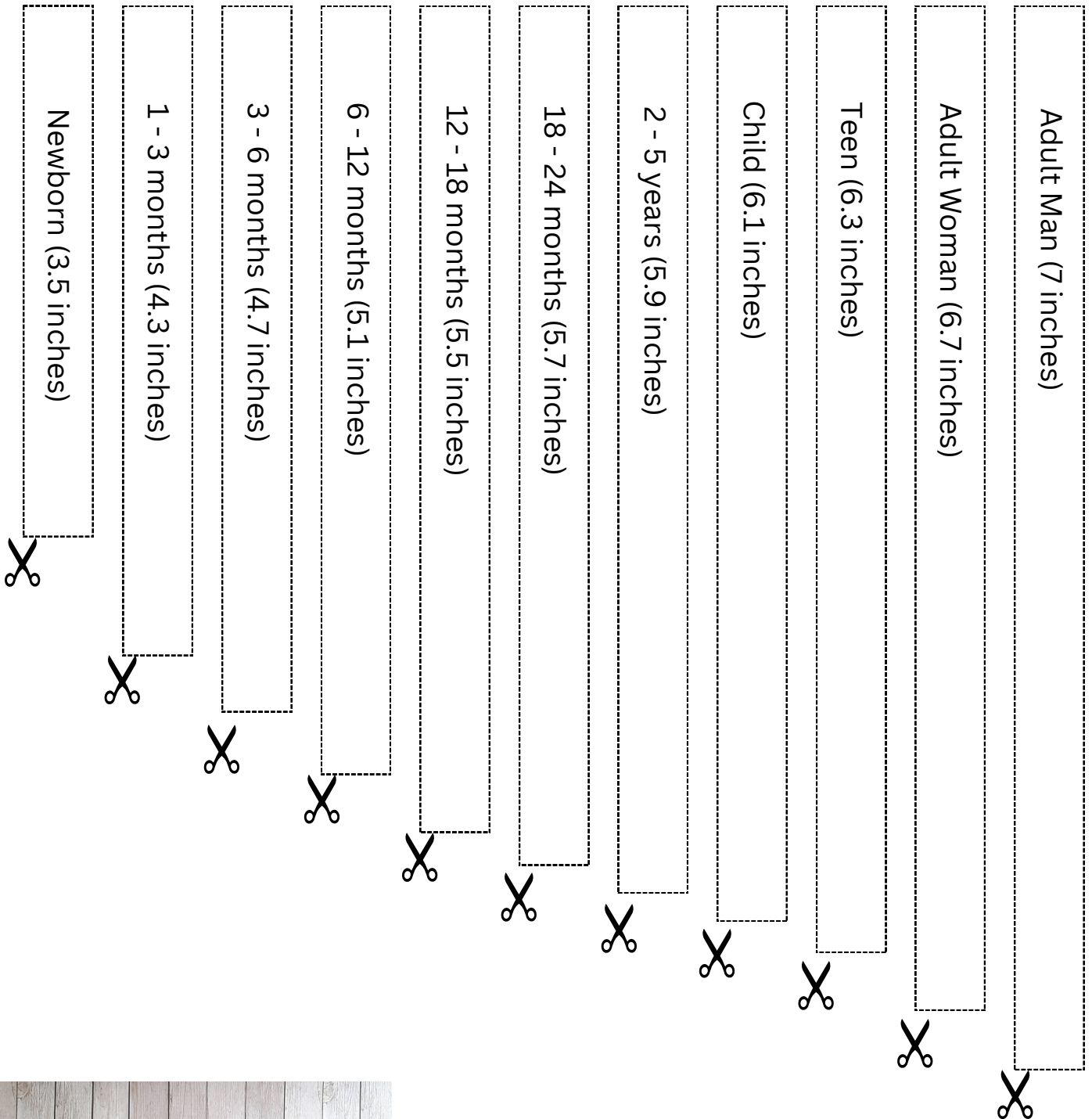


Instructions:

1. Ensure your printer is set to A4 when printing this sizing template.
2. Choose the circle size you need (check sizing chart excel sheet)
3. Start crocheting your hat in the round (flat & using whatever stitch the pattern calls for).
4. Keep increasing (flat) until your project reaches the edge of the circle template you chose.
5. Continue crocheting your hat without increasing anymore. Check beanie or hat side length in next sheets.

Hat Side Length (For Hat With Brim)

(Distance from **Top** of Crown to **Top** of Ears)



Instructions:

1. Check out the sizing chart for the hat size you need from the Excel Sheet. p.1
2. Cut out the appropriate strip length from this page.
3. Continue crocheting your hat until you reach the length of your strip (from top of crown to top of ear).

Beanie Side Length (Covers Ears)

(Distance from **Top** of Crown to **Bottom** of Ears)

Adult Man (9.25 inches)

Adult Woman (8.75 inches)

Teen (8.5 inches)

Child (8 inches)

2 - 5 years (7.5 inches)

18 - 24 months (7.25 inches)

12 - 18 months (6.75 inches)

6 - 12 months (6.5 inches)

3 - 6 months (6 inches)

1 - 3 months (5.5 inches)

Newborn (4.5 inches)

Instructions

1. Check out the sizing chart for the beanie size you need from the Excel Sheet. p.1
2. Cut out the appropriate strip length from this page.
3. Continue crocheting your beanie until you reach the length of your strip (from top of crown to bottom of ear).



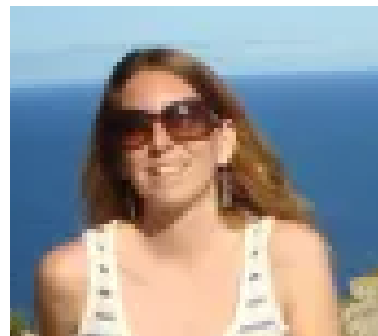
Thank You For Visiting My Blog!

Hi there!

I'm May, the designer behind [Start Crochet Blog](#). Thank you for downloading this template. I hope you enjoy it! Let me know if you have any questions.

Happy crocheting!

May xx



Disclaimer

- This template has been designed by May Shehab from [startcrochet.com](#)
- These designs can be used for HOME PRINTING ONLY.
- NOT FOR COMMERCIAL USE
- Designs are for PERSONAL USE ONLY, rights to files//photos/designs are not transferrable.
- NO RETURNS or REFUNDS will be issued on Digital Purchases.
- You may not EXTRACT any parts of the design for other use.
- Colors might appear different on screen than in print.
- Design of printable files or their parts, may not be REPLICATED, ALTERED, SHARED or RESOLD. All Rights Reserved.

I'd love to see your finished item, so please tag me using #startcrochet or link your work to the pattern on [startcrochet.com](#)

Please follow my accounts to see what else I'm up to and to keep in touch:

Facebook: <https://www.facebook.com/startcrochet>

Instagram: <https://www.instagram.com/startcrochet>

Pinterest: <https://www.pinterest.ch/startcrochet>

Ravelry: <https://www.ravelry.com/people/StartCrochet>

Thank you!

© All rights for this template are reserved to Start Crochet. Copies and/or reproduction and reselling of this template is a violation of the law.
